

MANLY YACHT CLUB **HELLY HANSEN**
WOMEN'S CHALLENGE 2024



SAILING INSTRUCTIONS
DINGHY CLASSES - SATURDAY 23rd MARCH 2024
YACHT CLASSES - SUNDAY 24TH MARCH 2024



Organizing Authority



between Wood St and Stuart St, East Esplanade, Manly,
PO Box 22, Manly, NSW 1655

P: 02 9977 4949 E: womenschallenge@myc.org.au W: www.myc.org.au

GENERAL SAILING INSTRUCTIONS

1 RULES

- 1.1 The Organising Authority for the event is the Manly Yacht Club (MYC).
- 1.2 The Race will be governed by;
 - a) the Racing Rules of Sailing (RRS),
 - b) the 2021-2024 Special Regulations of Australian Sailing (AS).
- 1.3 A keelboat shall comply with the Special Regulations Part 1 for Category 7. An audited Special Regulations Form for the relevant Category (or higher) shall be submitted with the entry if not already held by MYC.
- 1.4 An off the beach boat shall comply with the Special Regulations Part 2.
- 1.5 The Sailing Office of MYC shall be the Race Committee ("RC") for the purposes of, and with, the powers and discretions contained in RRS 90.1.
- 1.6 Fixed and retractable spinnaker poles and bowsprits will be permitted for the purpose of setting asymmetrical spinnakers. This amends RRS 55.2 and 55.3.
- 1.7 Anchors which protrude from the bow must be removed.

2 NOTICES TO COMPETITORS

- 2.1 Notices to Competitors for Saturday's Centreboard racing will be posted on the Official Notice Board located at <https://www.myc.org.au/notice-board/>
- 2.2 Notices to Competitors for Sunday's Yacht race will be posted on the Official Notice Board of the Sydney Harbour Women's Keelboat Series located at <https://app.sailsys.com.au/club/27/results/series/2715/noticeboard>.

3 CHANGES TO THE SAILING INSTRUCTIONS

- 3.1 Any change to the Sailing Instructions will be posted before 0830hrs on the day it will take effect except that any change to the schedule of races will be posted prior to 1800hrs on the day before it will take effect.
- 3.2 Any change to the Sailing Instructions made 'afloat' will be indicated by the display of Code Flag L and accompanied by two sound signals. The change will be communicated on the designated course VHF channel 72 and/or displayed on the committee boat.

4 SIGNALS MADE ASHORE

- 4.1 Signals made ashore will be displayed from the Signal Mast on the end of the MYC wharf.
- 4.2 When flag AP is displayed ashore, '1 minute' is replaced with 'not less than 60 minutes' in the race signal AP.

5 RACING AREA

- 5.1 Racing will be conducted on the waters of Sydney Harbour.
- 5.3 The Committee Vessel will announce the starting area on the Race Management Channel VHF 72, when on station.

6 MARKS

- 6.1 Boats shall pass on the safe water side of the following Cardinal Marks:
 - a) Gowland Bombora (Dobroyd) – All Marks
 - b) Sow and Pigs Reef– All Marks
 - c) Shark Island– South and West Marks
- 6.2 Boats shall not sail in the following prohibited areas:
 - a) The area bounded by imaginary lines projected from the shore joining the West, South and East Cardinal Marks surrounding Gowland Bombora.
 - b) The area bounded by imaginary lines joining the North, East, South and West Cardinal Marks surrounding Sow and Pigs Reef.

- c) The Area between AS Mark Shark Island and Shark Island is a continuing obstruction and no boat shall pass between them.
- 6.3 For the purpose of RRS 19 and 20, all Cardinal Marks surrounding the Gowland Bombora and the Sow and Pigs Reef, and all imaginary straight lines projected between such marks, shall be deemed obstructions.
- 6.4 All competitors are requested to remain to the starboard side of shipping channels where practicable.
- 6.5 Competitors must keep clear of commercial shipping, defence shipping, ferries displaying orange diamonds and vessels engaged in towing.
- 6.6 An active exclusion zone exists around ships and ferries that extends 30m either side; 30m from the stern; 200m ahead of a ferry and 500m ahead of any ship. Competitors must not pass between a ship and an escort vessel.

7 ALTERNATIVE PENALTIES

- 7.1 Your attention is turned to RRS 44.1 and 44.2.
- 7.2 For an infringement of RRS Part 2, the Two-Turns Penalty (RRS 44.2) shall apply.
- 7.3 For an infringement of any other rule or requirement, the Scoring Penalties of RRS 44.3 shall apply. The penalty shall be computed as a percentage of the number of entries in the relevant division.

8 ABANDONED RACES

- 8.1 Abandoned races will not be re-sailed. Race fees are non-refundable for abandoned races.

9 PROTESTS

- 9.1 Protest forms are available at the MYC Sailing Office. Protests and requests for redress or reopening shall be delivered there within the appropriate time limit.
- 9.2 The protest time limit is 90 minutes after the last boat has finished the last race of the day or the race committee signals no more racing today, whichever is later.
- 9.3 Notices will inform competitors of hearings in which they are parties or named as witnesses.
- 9.4 Notices of protests will be posted on <https://app.sailsys.com.au/club/27/results/series/2715/noticeboard> to inform boats under RRS 61.1(b).

10 RADIO COMMUNICATION

- 10.1 Except in an emergency while racing, a boat shall neither make radio transmissions nor receive radio transmissions not available to all boats. This restriction also applies to mobile telephones.
- 10.2 Yachts shall maintain a listening watch on VHF Channel 72 prior to and for the duration of the race.
- 10.3 Competitors retiring from the race shall advise the RC on Channel 72 or the Sailing Office by phone 99774949 as soon as practicable.

11 RESPONSIBILITY

- 11.1 Competitors participate in the MYC Women's Challenge at their own risk. Special attention is drawn to RRS Fundamental Rule 3, which states: "The responsibility for a boat's decision to participate in a race or to continue racing is hers alone".
- 11.2 The Organising Authority, Event Sponsors, and their respective officers, employees, volunteers and members accept no liability for any injury, loss or damage that may be suffered by any competitor, and any liability for harm to persons that results from breach of an express or implied warranty that the MYC Women's Challenge and all services relating thereto will be conducted or rendered with reasonable care and skill is excluded.
- 11.3 Neither MYC, nor the event sponsors, are responsible for the seaworthiness of a boat whose entry is accepted or the sufficiency or adequacy of its equipment.

SATURDAY, 23rd MARCH 2024

HANSA 303 DINGHIES, O'PEN SKIFFS, LASERS

1. Schedule of Races

- 1.1 Racing is scheduled for **Saturday, 23rd March 2024**.
- 1.2 There will be a pre-race briefing for the Hansa 303 Dinghy Class on the MYC rigging deck at 0900 hours.
- 1.3 There will be a pre-race briefing for the O'pen Skiffs at 1320 hours and lasers at 1330 hours on the MYC rigging deck.
- 1.4 There are up to three races scheduled for all classes/divisions.
- 1.5 A division must be constituted by a minimum of three boats.
- 1.6 The scheduled time of the warning signal of the first race for each class or division is shown below (to be read in conjunction with RRS 26). Races will be started no earlier than times shown. Times shall be taken from visual signals; the failure of a sound signal shall be disregarded.
- 1.7 When more than one race will be held on the same day, the warning signal for each succeeding race will be made as soon as practicable after the finish of the previous race.

WARNING	CLASS	FLAG
1000 hours	Hansa 303 Dinghy – All Female	Numeral Pennant 1
1420 hours	O'pen Skiff – Female Helm	O'pen Skiff class flag
1440 hours	Laser – Female Helm	Laser Class flag

2. Class Flags

- 2.1 The class flags will be as follows:

CLASS	FLAG
Hansa 303 Dinghy – All Female	Numeral Pennant 1
O'pen Skiff – Female Helm	O'pen Skiff Class Flag
Laser – Female Helm	Laser Class Flag

3. The Courses

- 3.1 Courses for Hansa 303 Dinghy and O'pen Skiff classes are show in **Appendix 2**.
- 3.2 Courses for Laser classes are shown in **Appendix 3**.

4. The Start

- 4.1 All races will be scratch starts from the Committee Boat. The starting line will be between the flagstaff on the Committee Boat at the starboard end and an orange spherical buoy at the port end. The Committee Boat will fly the MYC Burgee and an Orange Flag when it is on station.

5. The Finish

- 5.1 The finish will be on the Committee Boat. The Committee Boat will fly the MYC Burgee and a Blue Flag when it is on station.

6. Time Limits

- 6.1 The time limit for each race shall be 90 minutes or shorter at the discretion of the Race Committee.

7. Further Information

- 7.1 A presentation will take place back at the club after racing.

SUNDAY, 24TH MARCH 2024

YACHTS, YNGLINGS, J24 CLASSES

1. Schedule of Races

- 1.1 Racing is scheduled for **Sunday, 24th March 2024**.
- 1.2 The following classes/divisions may be sailed:
 - Yachts – All Female – Division 1 & Division 2
 - Yachts – Female Helm – Division 1 & Division 2
 - Ynglings – Female Helm – are to be included in Division 2, check start list.
 - J24s – Female Helm – are to be included in Division 2, check start list.
- 1.3 There is one race scheduled for each class/division.
- 1.4 A division must be constituted by a minimum of four boats.
- 1.5 The scheduled time of the warning signal for each class or division is shown below (to be read in conjunction with RRS26). Races will be started no earlier than times shown. Times shall be taken from visual signals; the failure of a sound signal shall be disregarded.

WARNING	CLASS/DIVISION	FLAG
1230 hours	Yachts – All Female – Division 1	Class Flag E
1230 hours	Yachts – Female Helm – Division 1	Class Flag E
1235 hours	Yachts – All Female – Division 2	Class Flag F
1235 hours	Yachts – Female Helm – Division 2	Class Flag F

2. Class Flags

- 2.1 The class flags will be as follows:

CLASS	FLAG
Yachts – All Female – Division 1	Class Flag E
Yachts – Female Helm – Division 1	Class Flag E
Yachts – All Female – Division 2	Class Flag F
Yachts – Female Helm – Division 2	Class Flag F

3. The Courses

- 3.1 Courses for Yachts – Division 1 and Division 2, Ynglings and J24s are shown in **Appendix 1**.

4. The Start

- 4.1 All races will be scratch starts from the Committee Boat. The starting line will be between the flagstaff on the Committee Boat at the starboard end and an orange buoy at the port end. The Committee Boat will fly the MYC Burgee and an Orange Flag when it is on station.

5. The Finish

- 5.1 The finish will be on the Committee Boat. The Committee Boat will fly the MYC Burgee and a Blue Flag when it is on station.

6. Time Limits

- 6.1 Subject to 6.2 and 6.3, the time limit for yachts shall be 1630 hours.
- 6.2 If the first boat in a division finishes between 1600 hours and 1630 hours the time limit shall be extended by 30 minutes from the finishing time of the first boat in that division.
- 6.3 If a race is postponed for any reason the time limit will be extended by the length of the postponement or for 30 minutes whichever is less.

7. Further Information

- 7.1 There will be a presentation back at the club this year after racing.



Sydney Harbour Women's Keelboat Series 2023-2024

APPENDIX 1 – MYC Helly Hansen Women's Challenge Courses on 24 March 2024

Division 1

Course	Start Area	Marks	Finish Area	Approx.
1	SPR	- MW - ME - CP - LB - SIM - SI - CBN - CP - NP -	SPR	12.4nm
2	SPR	- GP - LB - NP - SPR(P) - EB - GP - MW - ME - CP - LB - NP -	OB	11.6nm
3	SPR	- EB - MW - ME - CP - EB - CP - EC - CBN - SPR(P) - OB - LB -	OB	12.0nm
4	OB	- RB - PP - SPR(P) - GP - LB - SIM - SI - OB - EC -	OB	11.9nm

Division 2

Course	Start Area	Marks	Finish Area	Approx.
1	SPR	- CP - LB - SIM - SI - CBN - CP - EC -	SPR	10.2nm
2	SPR	- GP - LB - EC - SPR(P) - GP - MW - ME - CP - LB - NP -	OB	9.5nm
3	SPR	- EB - CP - EB - CP - EC - CBN - SPR(P) -	OB	9.7nm
4	OB	- SIM - SI - SPR(P) - GP - LB - SIM - SI - OB - EC -	OB	9.5nm

Note: All marks shall be rounded or passed to starboard except for marks suffixed (P) which shall be rounded or passed to port.

START & FINISH LOCATIONS AND MARK DESCRIPTIONS

CBN - The northern most AS mark in Chowder Bay, 200m SW of Georges Head.

CP - AS mark 200m West of Cannae Point Flagstaff.

EB - AS mark Edwards Beach, 200m north-east of Rocky Point, Balmoral.

EC - AS mark South of Sow & Pigs, 150m NW of Eastern Channel Pile.

GP - AS mark 500m east of Grotto Point.

LB - AS mark 150m west of Lady Bay.

ME - AS mark Manly East in North Harbour.

MW - AS mark Manly West in North Harbour.

NP - AS mark in the vicinity of Neilson Park.

OB - AS mark in Obelisk Bay.

PP - As mark in the vicinity of Point Piper.

RB - AS mark Rose Bay, 700m south-east of Shark Island.

SI - Shark Island.

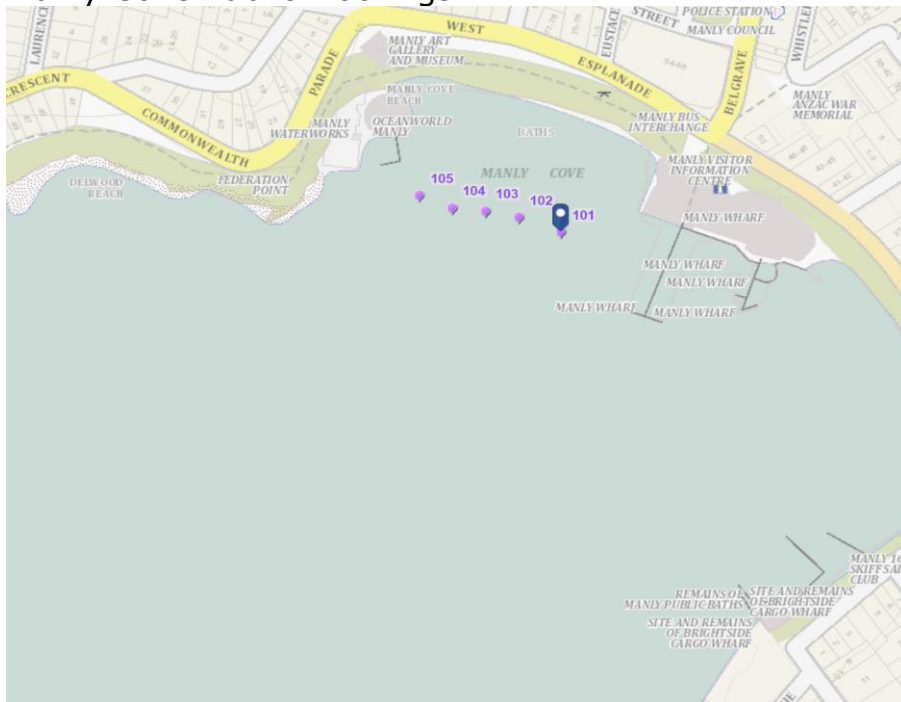
SIM - AS mark SE of Shark Island (The area between the Shark Island AS Mark (SIM) and Shark Island is a continuing obstruction and no boat shall pass between them).

SPR - Sow & Pigs Reef (The area bounded by imaginary lines joining the North, East, South and West Cardinal Marks surrounding Sow and Pigs Reef is a continuing obstruction and no boat shall pass between them).

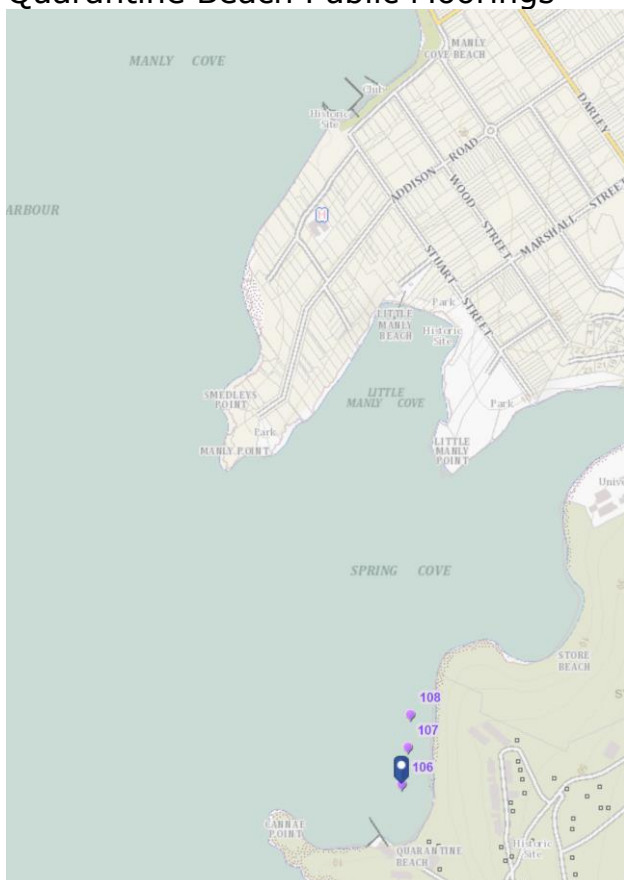
Start / Finish Mark - Orange buoy.

Appendix 1.1 – Public Moorings

Manly Cove Public Moorings



Quarantine Beach Public Moorings

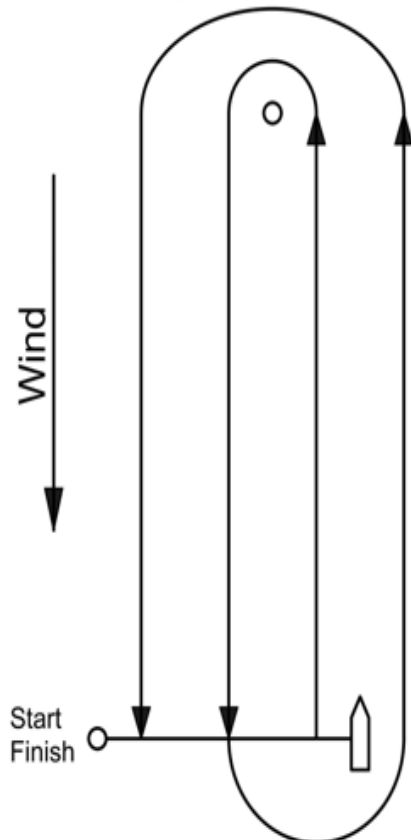


These public moorings are often in use. However, if you can get one MYC will run a Tender service to them. Call MYC Tender on VHF 72. Indicate your location either Manly Cove or Quarantine.

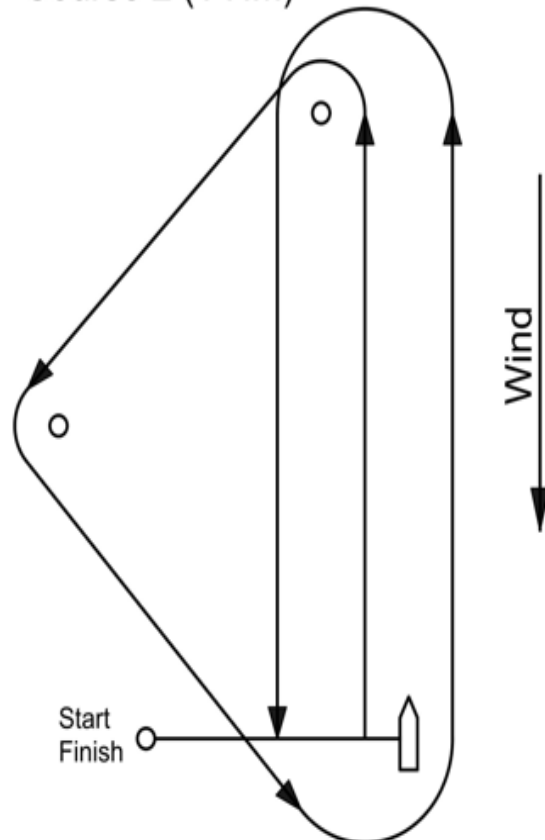
APPENDIX 2 – HANSA 303 and O’PEN SKIFF COURSES

Courses may be sailed to Port or Starboard as indicated by a red or green flag displayed on the Committee Boat. If no flag is displayed the courses will be sailed as shown. For all courses, the leg length from start line to top mark should be around 0.4NM.)

Course 1 (1 NM)



Course 2 (1 NM)



APPENDIX 3 – LASER COURSES

All marks to port unless otherwise indicated. All distances are approximate.

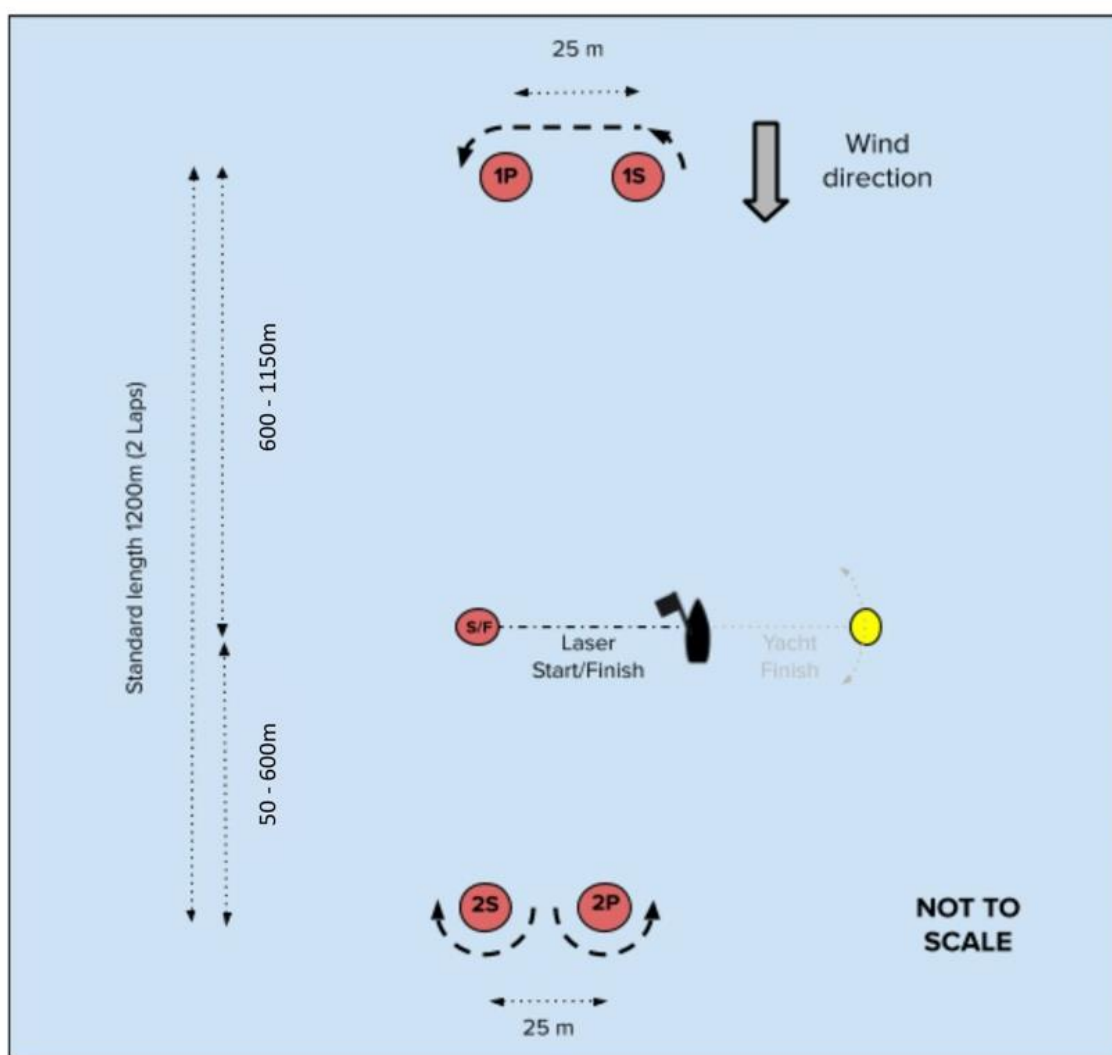
The Course described below shall be displayed on a board on the stern of the start boat, before or with the Warning Signal.

Marks 1, 1A shall be rounded to port.

Marks 2S/2P may be replaced by a singular Mark 2, which shall be rounded to port and coloured the same as the two gate marks it replaces.

Course	Course Descriptions
1	Start – 1S – 1P – 2S/2P – 1S – 1P – 2S/2P – Finish
2	Start – 1S – 1P – 2S/2P – 1S – 1P – 2S/2P – 1S – 1P – 2S/2P – Finish

The indicative course layout is shown below. The diagram is approximate only and is not to scale.



LOCATION OF HARBOUR MARKS

